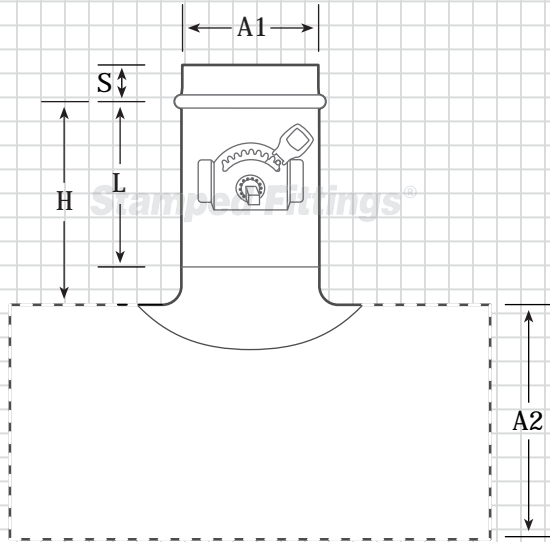


Stamped Fittings® – Product Specifications

90° Die Stamped Saddle Tap with Damper (DSTD)



* Field installed fitting

Key (DSTD)

A1 = 4", 5", 6", 8", 10", 12"
 A2 = Up to 24" (A2 is greater than or equal to A1)
 S = 2"
 H = see chart
 L = 4"

Features

n 22 Gauge galvanized body

Low-Leakage Dampers

- n 2" Stand-off (20 ga.)
- n Nylon bushings with O-ring for sealing of holes
- n Locking handle for adjustment of damper - ease of balancing
- n 3/8" Continuous square rod through damper
- n 4" - 22" Standard dampers (22 ga.)
- n 24" - 36" Standard dampers (20 ga.)

Dimensions

(A1)	(H)
4"	7-3/4"
5"	7-7/8"
6"	8-3/4"
8"	9"
10"	9"
12"	9-1/8"