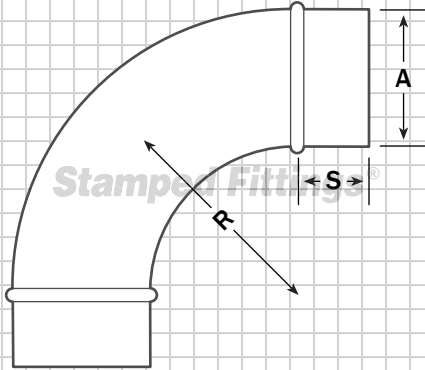
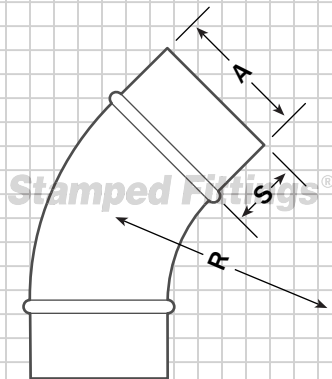


90° Die Stamped Flangeless Elbow
 Galvanized (DSE90)
 Galvaneal (NDSE90)



45° Die Stamped Flangeless Elbow
 Galvanized (DSE45)
 Galvaneal (NDSE45)



Key

A = Diameter, nominal size
 R = 1-1/2 A (centerline radius)
 S = 2"

Materials Available

- Galvanized (3" - 4"), 24 ga.
- Galvanized (5" - 12"), 22 ga.
- Galvaneal [paint grip] (4"), 24 ga.
- Galvaneal [paint grip] (5" - 12"), 22 ga.

Welding Process

Flangeless elbows are continuously stitch welded on the throat and heel from end to end (past the bead).

Dimensions

(A)	90° (R)	Wt. Per 90° Elbow (DSE90)	Wt. Per 90° Elbow (NDSE90)
3"	4.5"	0.8#	N/A
4"	6.0"	1.4#	1.4#
5"	7.5"	1.8#	2.5#
6"	9.0"	2.2#	3.4#
7"	10.5"	3.5#	4.4#
8"	12.0"	4.7#	5.4#
9"	13.5"	6.1#	5.9#
10"	15.0"	7.6#	6.4#
12"	18.0"	10.2#	9.0#
(A)	45° (R)	Wt. Per 45° Elbow (DSE45)	Wt. Per 45° Elbow (NDSE45)
3"	4.5"	0.6#	N/A
4"	6.0"	0.8#	0.8#
5"	7.5"	1.0#	1.5#
6"	9.0"	1.5#	2.0#
7"	10.5"	1.8#	2.6#
8"	12.0"	3.0#	3.2#
9"	13.5"	3.5#	4.0#
10"	15.0"	4.2#	4.8#
12"	18.0"	6.5#	6.6#